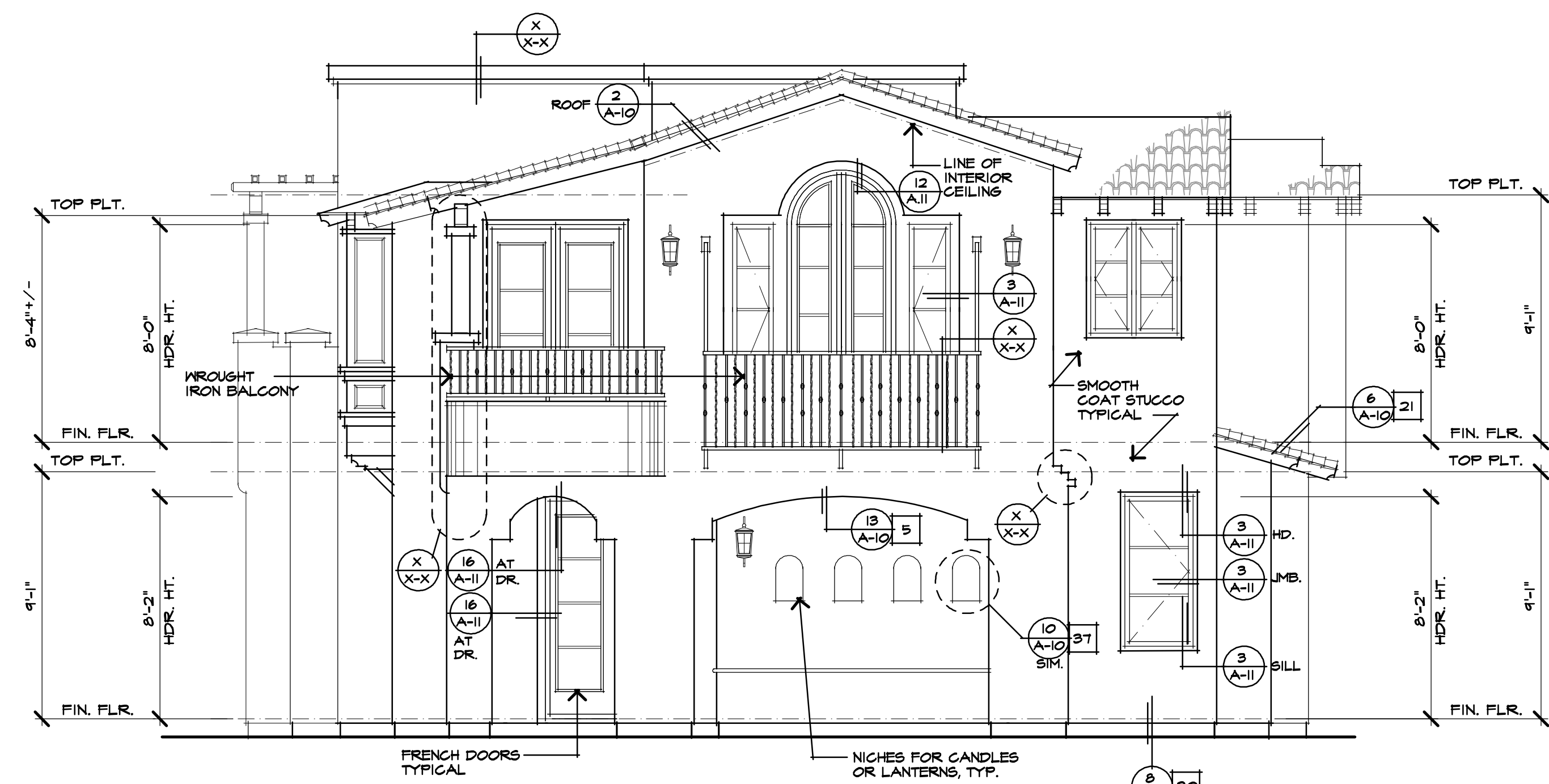


FRONT ELEVATION (WEST)

SCALE: 1/4" = 1'-0"



REAR ELEVATION (EAST)

SCALE: 1/4" = 1'-0"

ELEVATION/ROOF NOTES

10/25/05

1. 2X FASCIA MATCH EXISTING, SEE DETAIL.
2. 2X BARGE MATCH EXISTING, SEE DETAIL.
3. 4" X 8" EXPOSED RAFTER TAILS W/ SHAPED ENDS, SEE DETAIL. ALL RAFTER TAILS TO BE EQUALLY SPACED, FRAMER TO COORDINATE WITH TRUSS ENGINEER.
4. EXTERIOR PLASTER OVER PAPER BACKED WIRE MESH.
5. EXTERIOR PLASTER SOFFIT OVER EXPANDED METAL LATH.
6. 1- COAT STUCCO SYSTEM, BY
7. EXTERIOR SIDING, SEE EXTERIOR FINISHES NOTES.
8. EXTERIOR GRADE PLYWOOD SOFFIT.
9. TONGUE-AND-GROOVE SOFFIT.
10. SPACED X VERTICAL WOOD TRIM AT XX' O.G. OVER EXTERIOR GRADE PLYWOOD OR M.D.O. BOARD.
11. EXPOSED WOOD CORNER TRIM, SEE EXT. FINISH NOTES.
12. EXTERIOR GRADE PLYWOOD OR M.D.O. BOARD.
13. SIMULATED PREGAST FOAM TRIM. SEE ELEVATION FOR ACTUAL SIZE.
14. FOAM TRIM, SEE ELEVATION FOR ACTUAL SIZE.
15. EXPOSED WOOD TRIM, SEE ELEVATION FOR SIZE.
16. BUILT-UP 'CURVED' PLYWOOD TRIM OR M.D.O. BOARD.
17. FIXED SHUTTERS, SEE ELEVATION FOR SIZE.
18. POTSHELF, SEE DETAIL.
19. PROVIDE 6.I. FLASHING AT ALL EXPOSED WOOD TRIM.
20. CONTINUOUS 6.I. EXTERIOR PLASTER SCREED, SEE DETAIL.
21. 6.I. FLASHING ROOF TO MALL.
22. 6.I. FLASHING AND SADDLE / CRICKET.
23. APPROVED TERMINATION CAP WITH SPARK ARRESTER FROM FIREPLACE MANUFACTURER.
24. LINE OF INTERIOR CEILING OR INTERIOR WALL.
25. THIN-SET MASONRY VENEER.
26. LIGHTED ADDRESS SIGN.
27. SHAPED FOAM CORBEL, SEE DETAIL.
28. SHAPED WOOD CORBEL, SEE DETAIL.
29. WOOD POST(S), SEE PLAN FOR SIZE.
30. EXPOSED WOOD BEAM, WITH SHAPED ENDS, SEE ELEVATION.
31. MANUFACTURED COLUMN.
32. PREGAST CONCRETE COMPONENT / TRIM, SEE DETAIL.
33. DECORATIVE FALSE TILE VENTS SEE ELEV. FOR LOCATION.
34. METAL RAILING, SEE DETAIL.
35. WOOD RAILING, SEE DETAIL.
36. DECORATIVE METAL, SEE DETAIL.
37. EXTERIOR PLASTER RECESS, SEE ELEVATION FOR LOCATION, DEPTH AND SIZE OF FINISHED OPENING.
38. 6.I. SCREENED & LOUVERED 'SHALE END VENT'. SEE ELEVATION FOR VENT SIZE AND LOCATION. SEE REQ'D. ATTIC VENTILATION CHART FOR MORE INFORMATION.
39. 6.I. SCREENED 'ROOF' AIR VENT. SEE REQUIRED ATTIC VENTILATION CHART FOR MORE INFORMATION.
40. DECORATIVE (FALSE) VENT / LOUVERED BOARD, SEE ELEVATION FOR SIZE AND LOCATION.
41. 6.I. GUTTER AND DOWNSPOUTS, GUTTER LAYOUT AND DOWNSPOUT LOCATIONS TO BE FIELD VERIFIED.
42. SYNTHETIC STONE VENEER, MATCH EXISTING COLOR, BY (CULTURED STONE VENEER - ER - 5144)
43. 2" SQUARE CERAMIC TILE, MATCH EXISTING DETAIL AT FRONT OF HOUSE.
44. LINE OF 1/2" MAINSCOT, SEE ELEVATION FOR HEIGHT.
45. LINE OF MAINSCOT FURRIS, SEE ELEVATION FOR HEIGHT, SEE SLAB INTERFACE PLAN FOR MORE INFORMATION.
46. 6.I. REGLET FOR COLOR COAT CHANGE.
47. MECHANICAL TUB ACCESS PANEL, CORROSION RESISTANT, VERIFY SIZE AND LOCATION, PAINT TO MATCH STUCCO COLOR.
48. REPEAT DETAIL AT OPPOSITE SIDE OF OPENING.

EXTERIOR FINISHES

7-21-05

ALL EXPOSED PLYWOOD TO BE EXTERIOR GRADE.
 ALL EXPOSED WOOD TRIM, PLYWOOD, SHUTTERS, POSTS AND CORBELS TO BE "RESANED" SHALL BE PRIMED ON ALL SIDES PRIOR TO INSTALLATION / ASSEMBLY.
 ALL EXPOSED POST TO BEAM HARDWARE TO HAVE HIDDEN INSTALLATION OR STRUCTURALLY APPROVED 'ORNAMENTAL' CONNECTORS WITH A TEXTURED BLACK POWDER-COAT FINISH.

PLASTER FINISHES

BASE STUCCO TO BE "CATFACE" FINISH BY OMEGA PRODUCTS INTERNATIONAL, INC.. REFER TO COLOR SELECTION INFORMATION PROVIDED BY ARCHITECT FOR MORE INFORMATION.

LAMPERT DIAS ARCHITECTS, INC.
 CHRISTINE LAMPERT A.I.A.
 CAROLYN A. DIAS A.I.A.
 P.O. BOX 4565
 SAN CLEMENTE
 CALIFORNIA 92674
 TEL 949 442 7301
 FAX 949 442 0829

WINCELE
 RESIDENCE
 231 TRAFALGAR LANE
 SAN CLEMENTE, CA. 92672

PARCEL #642-253-04
 N. TR. 822 BLK. II LOT. II U
 DRAWING CONTENTS
 FRONT AND REAR
 ELEVATIONS

JOB NUMBER	_____
PLAN CHECK 1	_____
PLAN CHECK 2	_____
BIDDING	_____
CONSTRUCTION	_____
CLARIFICATION	_____
RECORD	_____

REVISION	DATE
△	_____
△	_____
△	_____
△	_____

SHEET NUMBER

A=8